

Bridging Data's Multiverse

Enter a New Era of Unified Data Management with Hitachi Vantara and Data Dynamics

The modern data landscape is a labyrinth of diverse storage systems, data formats, and geographies, presenting organizations, irrespective of size or industry, with an intricate challenge. The pressing need for Unified Data Management (UDM) has never been more apparent. It stands as the linchpin of data operations, orchestrating cost efficiencies, fortifying security measures, strengthening compliance & governance, and catalyzing data-powered decision-making. In a strategic collaboration, Hitachi Vantara and Data Dynamics have joined forces embarking on a transformative journey to deliver unrivalled Unified Data Management (UDM) solutions.

OUR VISION

Unified Data Management

This strategic alliance embodies a shared vision: to empower organizations with end-to-end data solutions that empower them to not only govern and protect but also unlock the untapped value within their data assets.

Our UDM solutions are designed to:



Simplify data management across heterogeneous environments.



Improve data visibility and control.



Mitigate risk with robust data security and compliance.



Optimize storage infrastructure for performance and cost efficiency.



Empower organizations to harness the full potential of their data.

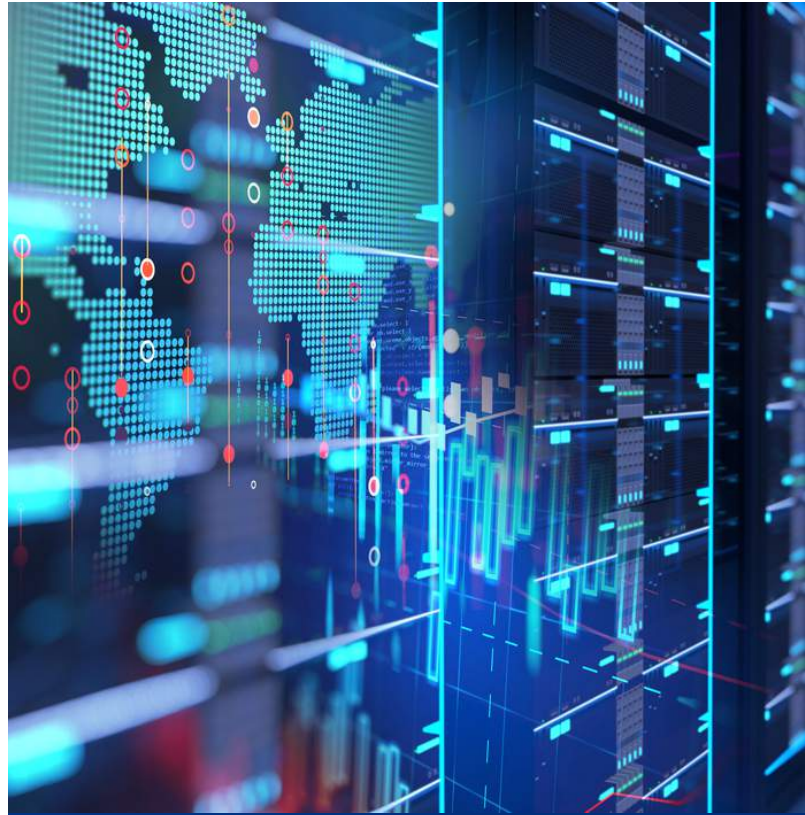
The Power of Hitachi Vantara's Infrastructure Solutions

Hitachi Vantara redefines data management with an extensive portfolio. Our solutions transcend traditional storage and processing, enabling advanced data discovery for structured and unstructured databases. Seamlessly integrating across on-premises, off-premises, and the cloud, we bridge the gap between data types, setting the stage for transformation. At the heart of our ecosystem is Hitachi's Content Intelligence solution. This game-changer uncovers hidden insights within your data using innovative algorithms and machine learning. Explore meaningful patterns and trends while harnessing the power of natural language processing (NLP) and sentiment analysis for unstructured data. Gain a competitive edge and foster innovation.

Data Dynamics' Expertise in Data Management

Data Dynamics is your partner in unified data management, converging data analytics, security, compliance, and migration. Our advanced technologies, including AI, ML, Blockchain, Intelligent Automation, and Data Science Studio, empower efficient data management at scale. Automate enterprise-scale data migration within hybrid cloud environments and gain invaluable insights into data utilization. Prioritize data security and governance with features for sensitive data discovery, classification, remediation, and immutable audit logging. Say goodbye to isolated data perspectives and disparate point solutions. Embrace a single, unified software that structures unstructured data, unlocks insights, fortifies security, ensures compliance, and drives cloud data management.

With Hitachi Vantara and Data Dynamics, your organization is poised to harness the true potential of your data. Unlock the future of data management, where simplicity, security, and insights converge.



CAPABILITY OVERVIEW

Utilizing a proprietary 5S approach (Streamlined, Secured, Stringent, Structured and Smart), Hitachi and Data Dynamics provide a structured and refined view of the data, transforming it from mere storage to valuable business assets.

STREAMLINED
data visibility and optimization



STEADFAST
data security & protection



STRINGENT
adherence to compliance



STRUCTURED
data archival



SMART
data-driven migration



Streamlined Data visibility and Optimization

- **Data Discover & Cataloging:** Discover, catalog, and analyze all data types for informed data management decisions, including on-premises, cloud, and hybrid environments, as well as structured, unstructured, and semi-structured data.
- **Metadata Analytics:** Metadata discovery, classification, and tagging for data lifecycle management and usage pattern analysis. Supports data relevance assessment and data retention and disposal policies, reducing data sprawl, consolidating data lakes and optimizing storage resources.
- **Context Analytics:** Utilize machine learning for contextual analysis of unstructured data, considering content, structure, and data relationships. Get deeper insights into data context, enhancing decision-making and user experiences.

Steadfast Data Security & Remediation

- **Content Analytics:** Content Analytics powered by a Data Science Engine, AI/ML, and NLP for accurate discovery and classification of data according to its sensitivity, consumer information, business value, and other criteria.
- **Risk Exposure Insights:** Generate actionable insights using multi-level logical expressions and operators, providing a comprehensive understanding of risk exposure through descriptive and diagnostic analytics.
- **Data Quality Management:** Identify and fix data quality issues, such as missing values, inconsistencies, and inaccuracies, improving the reliability and accuracy of data
- **Risk Remediation:** Quarantine high-risk sensitive data in secure storage, such as file shares on storage resources or object storage buckets, enhancing data security.
- **Access Control and file re-permissioning:** Implement policy-based and robust file permissions management, including functions like preserving, repermissioning, and security reassignments via SID Mapping.

Open Share Reporting: Enhance security by identifying sensitive data within open shares and rectifying permissions accordingly

Stringent Adherence to Compliance

- **Data Mapping:** Perform scans to identify files containing personal data, creating an inventory of processed, collected, stored, and shared data.
- **Classification:** Employ industry-standard compliance and governance templates to classify data based on regulatory guidelines, ensuring adherence to standards.
- **Immutable Audit Log:** Leverages blockchain technology to create immutable audit logs for data access activities, ensuring the generation of reliable governance reports for compliance
- **Data Tagging:** Establish file and folder tagging along with security protocols to ensure the protection of personal data.

Structured Data Archival

- **Custom Metadata Tags:** Enhance data management by identifying files suitable for cost-effective object storage migration and ensuring data quality through custom metadata tags.
- **Archive Policies:** Streamline data movement with flexible archive policies, making the seamless transition of unstructured data a breeze.
- **File Preservation:** Safeguard original content by effortlessly converting archived files into object format, preserving data integrity.
- **Efficient Data Retrieval:** Retrieve data with ease, whether through the software or RESTful API, from object resources, ensuring quick access when needed.
- **Search and Discovery:** Simplify audit and legal discovery with user-friendly search and file-saving features, improving efficiency and compliance.
- **S3-Compliant Access:** Access object files conveniently using S3-compliant browsers or custom applications via REST APIs, ensuring compatibility and ease of use.

CAPABILITY OVERVIEW

Smart Data-Driven Migration

- **Data Identification, Classification, and Location Mapping:** Accurate data identification, classification, and mapping of physical and virtual data locations. Manage transaction files and their location and ultimate destination.
- **Policy-Based Data Migration:** Policy-driven automated data movement, including migration, replication, transform & sync, and archiving across various platforms, both on-premises and in the cloud (File to File, File to Object, Object to Object).
- **Integrated Risk Controls:** Safeguard sensitive data and ensure regulatory compliance through the seamless integration of risk controls across file and object platforms.
- **Intelligent Tiering and Placement:** Dynamically
 - allocate resources and data storage to optimize performance based on usage patterns and requirements.
 - **Secure Data Sharing:** Enable secure data sharing in data lakes and pipelines with appropriate access controls to maintain data confidentiality and privacy compliance.
 - **Scalability and Performance:** Manage a high volume of policies and data files, serving data science, cloud, and governance teams for secure and reliable data management.
 - **Dedicated Migration Factory:** Allow users to design, build, deploy, report, and audit data migrations with their dedicated engineering team for a seamless data migration process.
 - **Post Migration Testing, Optimization, and Data Retention:** Post-migration analysis, audit log examination, defining retention and deletion criteria, and establishment of data lifecycle policies

SUCCESS STORIES

- > Rabobank Leads the Field With Compliance Discovery Search Time Reduced From Weeks to Hours With Hitachi Content Platform.
[Read Case Study →](#)
- > Fannie Mae Automate accelerates data delivery, eliminates data anomalies, and standardizes compliance with Hitachi's automated profiling and tagging of data sets powered by AI.
[Read Case Study →](#)
- > Fortune 50 U.S. Bank optimizes 80B files of data sprawl with Data Dynamics intelligent data management to protect customer privacy and reduce the risk of data exposure.
[Read Case Study →](#)
- > Fortune 50 Bank Discovers and Remediate 21k Files with Sensitive Data from 3M Files Scanned for Efficient Risk Management and Compliance with Data Dynamics.
[Read Case Study →](#)



Hitachi Vantara and Data Dynamics are committed to helping organizations unlock the power of Unified Data Management. Together, we provide the technology, expertise, and support needed to navigate the complexities of modern data environments and drive business success.

Contact us to learn more about how we can transform your data management strategy and empower your organization to thrive in the digital age.

For more information, call us at **1-678-403-3035** or visit website at www.hitachivantara.com